

**M<sup>CERABIEN</sup>  
MiLai**

# CHROMA MAP CATALOG

FUTUREPROOF  
YOUR LAB

**Created in collaboration with DT Dumitru Leahu**

DUMITRU LEAHU WAS BORN IN CAHUL, REPUBLIC OF MOLDOVA, AND IS CURRENTLY THE HEAD OF LABORATORY AT OPAL ATELIER IN PARIS, FRANCE. A GRADUATE OF THE APOLLONIA UNIVERSITY (IAȘI, ROMANIA) WITH A DEGREE IN DENTAL TECHNOLOGY, DUMITRU SPECIALIZES IN ALL-CERAMIC RESTORATIONS AND VENEERS ON REFRACTORY DIES. HE FOLLOWS BIOMIMETIC PRINCIPLES WHILE WORKING WITH A VARIETY OF HIGH-QUALITY DENTAL MATERIALS AND DIGITAL TOOLS.

# DUMITRU LEAHU

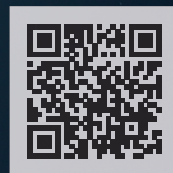
To refine his own skills and inspire others, Dumitru Leahu started replicating natural teeth with all their anatomical details by hand-sculpting with wax. This passion project evolved into the digital **Leahu Library** featuring tailored tooth designs. The two reduction options – “CALMA”, supporting anatomical features, and “SHADOW”, offering a traditional cut-back – create a versatile design ecosystem.

A fellow dental technician from Moldova with a laboratory in Paris, Dimitri Rotari, had a similar idea: He focused on the morphology of his own teeth to create the digital **Rotari Library** that reflects youthful male tooth forms and also offers two reduction options. When the two

young technicians decided to collaborate, the **Truedental Library** project was born. The library is available for exocad DentalCAD design software and offers a total of six variations to broaden dental restoration options.



Follow **@TRUEDENTALSTORIES** and **@DT.ROTARI** on Instagram for more insights and case examples.



Scan the QR code to purchase the library!

RU

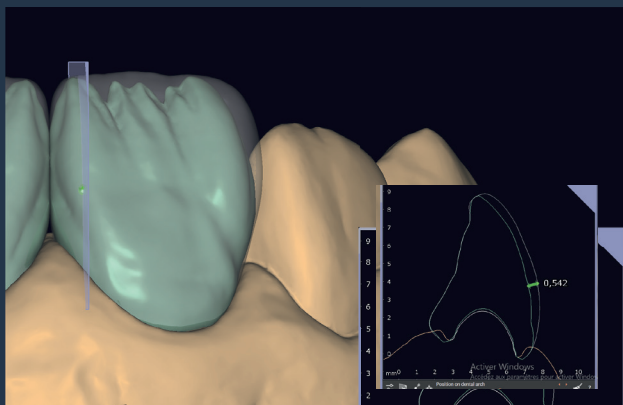
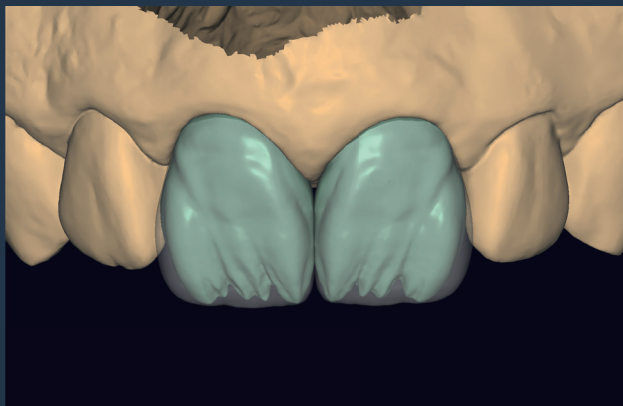
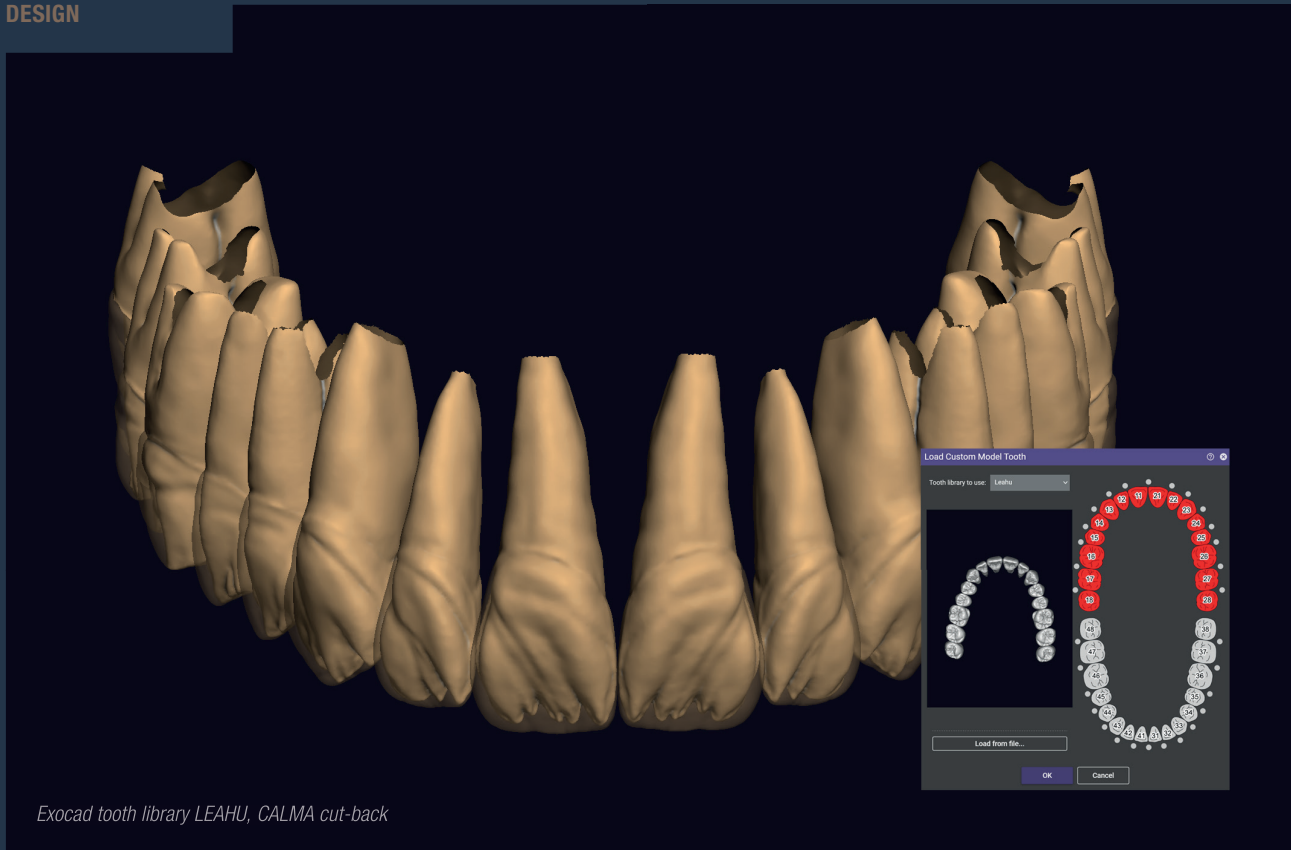
# COSMETIC VENEER BL1

THE DEMAND FOR COSMETIC VENEER TREATMENT IS ON THE RISE. MOST PEOPLE WANT IT BRIGHT WITH SUBTLE, REALISTIC EFFECTS LIKE VIVID INCISAL TRANSLUCENCIES. THESE EFFECTS ARE EASILY INTEGRATED WITH CERABIEN™ MiLai INTERNAL STAINS AND PORCELAINS.

## DETAILS IN SHORT

Underlying structure	Veneer preparation
Determined tooth shade	Bleach 2
Type of restoration	Veneers with vestibular cut-back
Framework material	Lithium disilicate BL1 MT
Restoration design	0,5 mm vestibular cut-back palatal surface just polished
Specific measures	1,0 mm veneers
Mixing liquid used	Simple water
Firing parameters	740°C

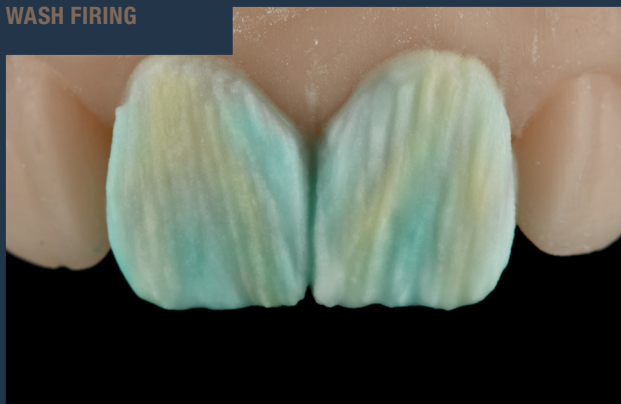
DESIGN



FRAMEWORK



WASH FIRING



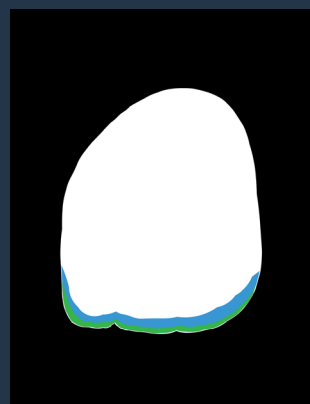
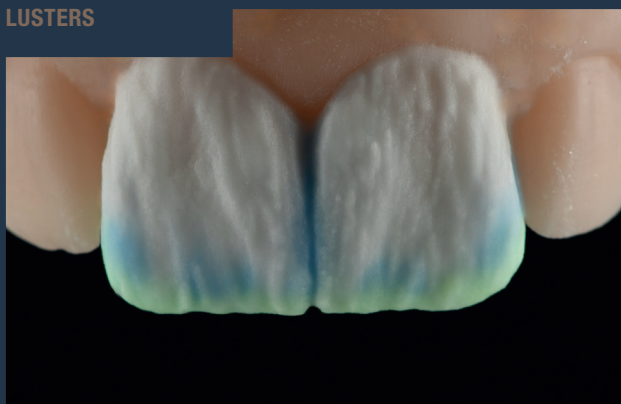
- LT1
- Value liner 1

INTERNAL STAINS



- White + Bright (1/10)
- Bright + B+ (2/1)

LUSTERS



- CREAMY ENAMEL
- LT ROYAL BLUE
- ELT1

FINAL RESULT



# CRACK LINES CASE

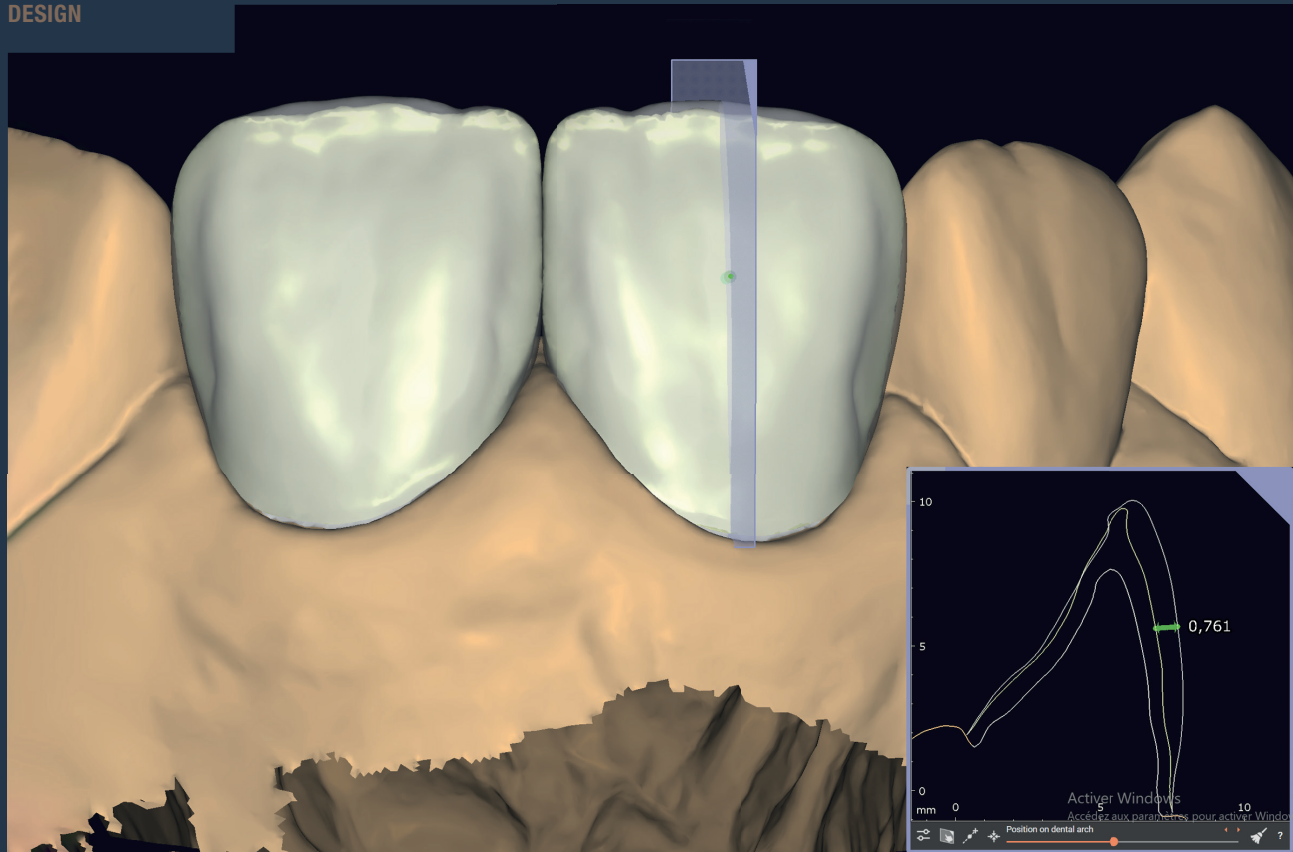
**CRACK (OR CRAZE) LINES ARE A TYPICAL FEATURE OF AGING FRONT TEETH. ESPECIALLY WHEN RESTORING FEWER THAN ALL MAXILLARY ANTERIOR TEETH IN AN AGING DENTITION, IT IS WORTH IMITATING THEM - E.G. WITH CERABIEN™ MiLai INTERNAL STAINS.**

## DETAILS IN SHORT

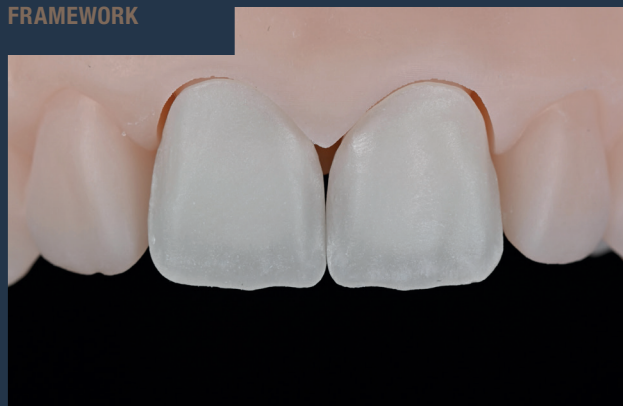
Underlying structure	Normal tooth preparation
Determined tooth shade	A2
Type of restoration	Crown with vestibular cut-back
Framework material	KATANA™ Zirconia YML A2
Restoration design	0,5 mm vestibular cut-back, palatal surface just polished
Specific measures	-
Mixing liquid used	Simple water
Firing parameters	740°C



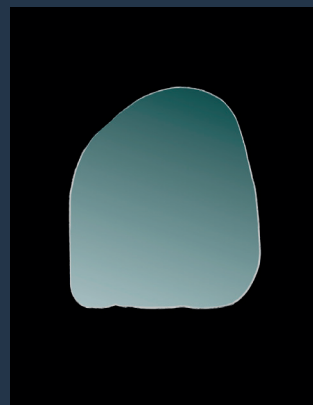
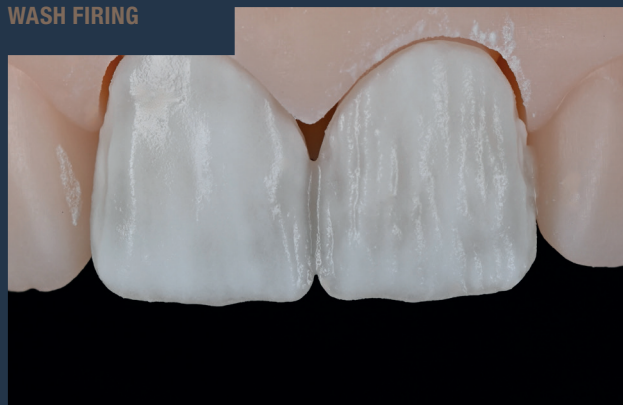
DESIGN



FRAMEWORK



WASH FIRING



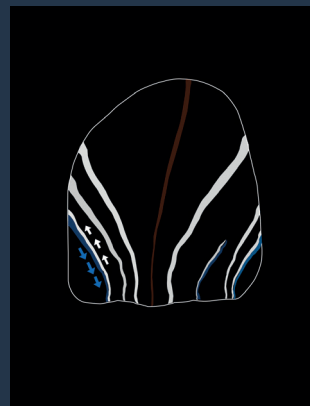
TX

INTERNAL STAINS, 1ST BAKE



- Cervical 2 + (A+) (1/1)
- Incisal Blue 1 + Incisal Blue 2 + Bright (1/1/1)

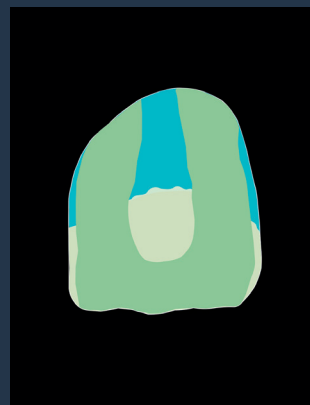
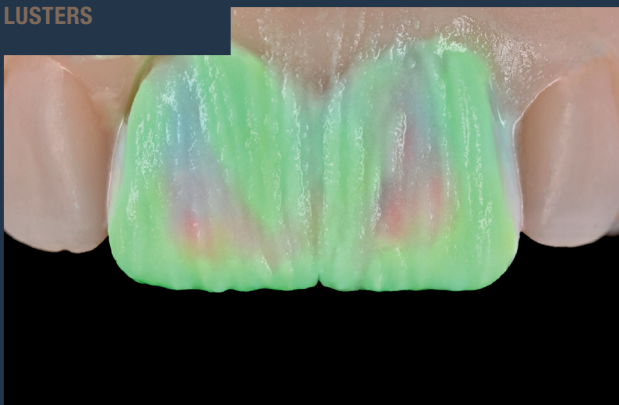
INTERNAL STAINS, 2ND BAKE



- White + Bright (1/1)
- Incisal Blue 1 + Gray + Bright (1/1/1)
- Cervical 2 + Tissue Red + Bright (1/1/2)



LUSTERS



- Enamel 2
- LT1
- ELT2

FINAL RESULT



*“These types of crack lines are most commonly seen in older patients. Using internal stains is the most predictable technique for replicating such natural details.”*

DUMITRU LEAHU

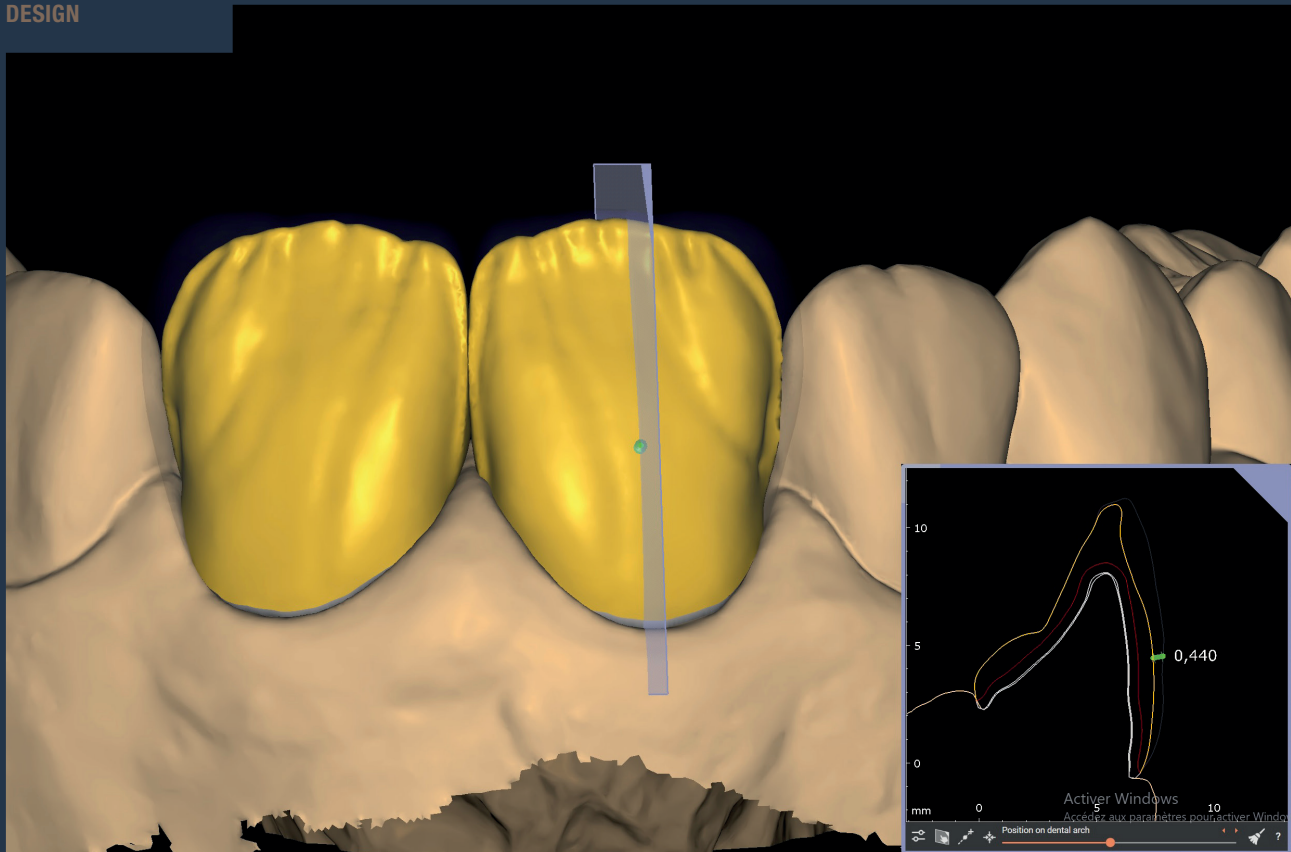
# ROUND NATURAL TEETH

**ROUND MAXILLARY ANTERIOR TEETH ARE USUALLY ASSOCIATED WITH A YOUTHFUL, FEMININE LOOK. HOWEVER, IT IS NOT JUST THE SHAPE THAT CREATES THIS LOOK, BUT ALSO THE INTERNAL PLAY OF COLOURS – EASILY CREATED USING THE INTERNAL STAIN TECHNIQUE WITH CERABIEN™ MiLai.**

## DETAILS IN SHORT

Underlying structure	Normal tooth preparation
Determined tooth shade	A2
Type of restoration	Crown with vestibular cut-back
Framework material	KATANA™ Zirconia STML A2
Restoration design	0,5 mm vestibular cut-back, palatal surface just polished
Specific measures	-
Mixing liquid used	Simple water
Firing parameters	740°C

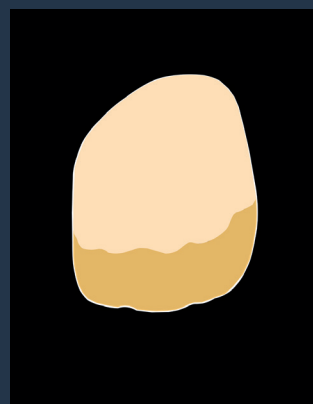
DESIGN



FRAMEWORK



WASH FIRING



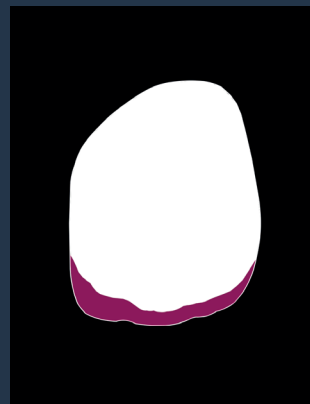
- TX
- Value Liner 2

INTERNAL STAINS



- White + Bright (1/10)
- Cervical 2
- Incisal Blue 1 + Incisal Blue 2 + Bright (1/2/1)
- White + Bright (1/5)
- Mamelon Orange 2 + Bright (1/5)

LUSTERS



- LTX
- ELT1 + CREAMY ENAMEL (1/1)

FINAL RESULT



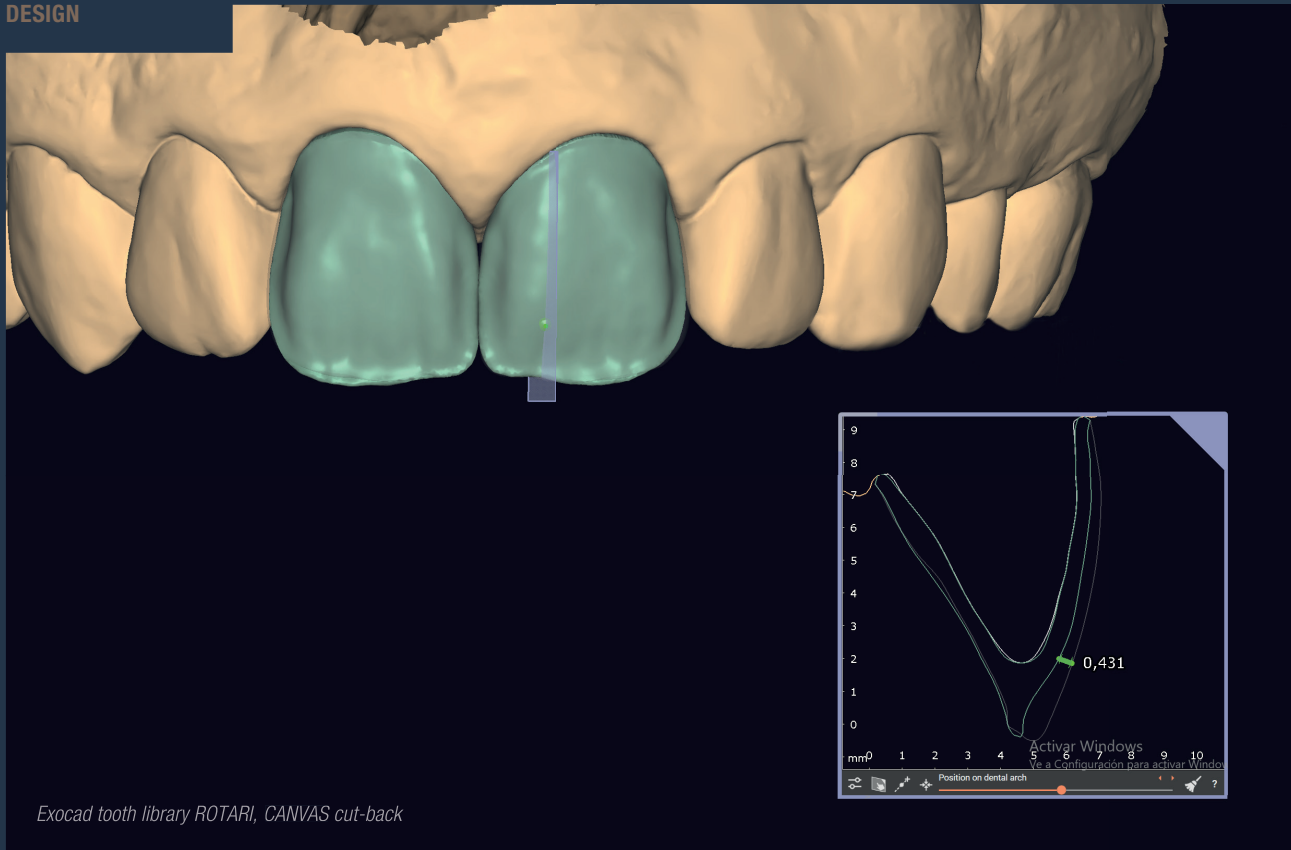
# YOUNG TEETH

IMITATING THE BEAUTIFUL SMILE OF A YOUNG PATIENT DOES NOT HAVE TO BE COMPLICATED. MICRO-LAYERING WITH SOME CHARACTERISTIC INTERNAL STAINING BELOW A THIN LAYER OF LUSTER PORCELAINS THAT ACTS AS ENAMEL CAN DO THE TRICK.

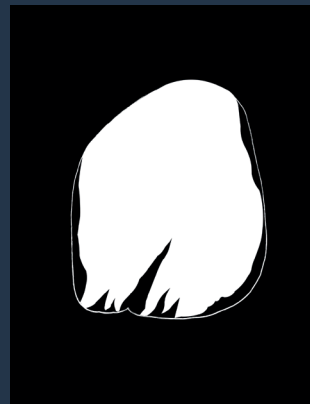
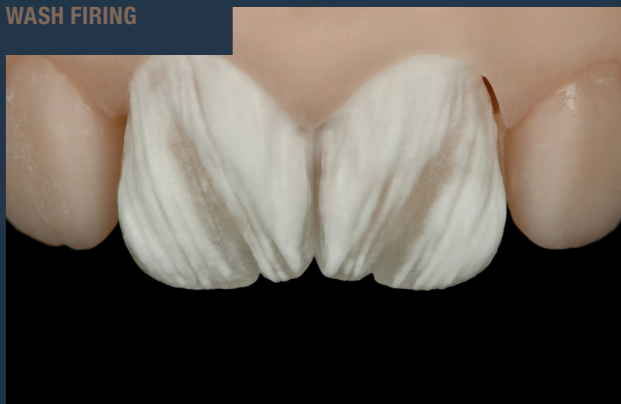
## DETAILS IN SHORT

Underlying structure	Normal tooth preparation
Determined tooth shade	A2
Type of restoration	Crown with vestibular cut-back
Framework material	Lithium Disilicate A1 MT
Restoration design	0,5 mm vestibular cut-back, palatal surface just polished
Specific measures	-
Mixing liquid used	Simple water
Firing parameters	740°C

DESIGN



WASH FIRING

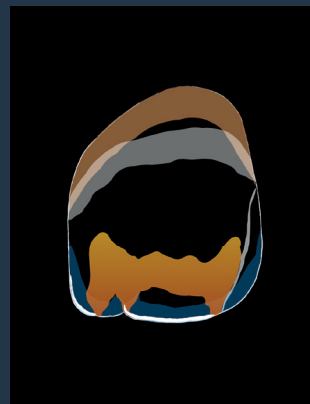


● Value Liner 1 + Value Liner 2 (1/1)



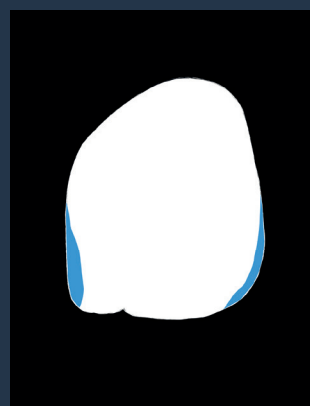


INTERNAL STAINS



- (A+) + Bright (1/1)
- Mamelon Orange 2 + White + Bright (1/1/3)
- White + Bright (1/20)
- Incisal Blue 1 + Incisal Blue 2 + Bright (1/2/1)
- White + Is Liquid

LUSTERS



- Aqua Blue 2
- LT1 + Creamy Enamel (1/1)

FINAL RESULT



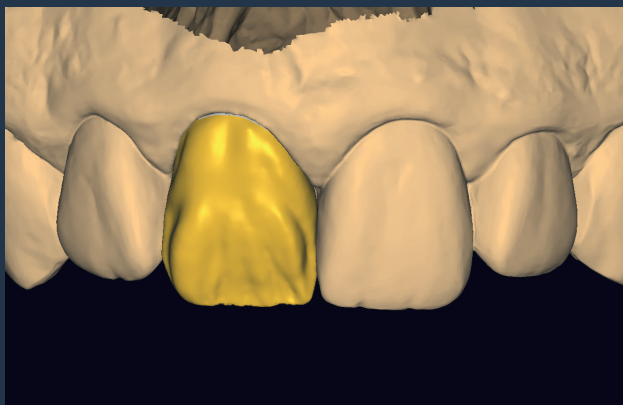
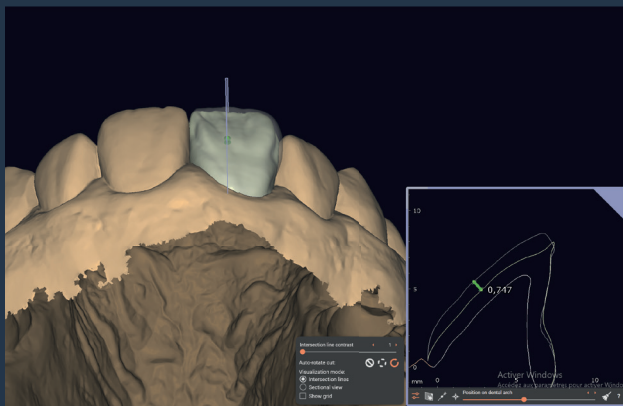
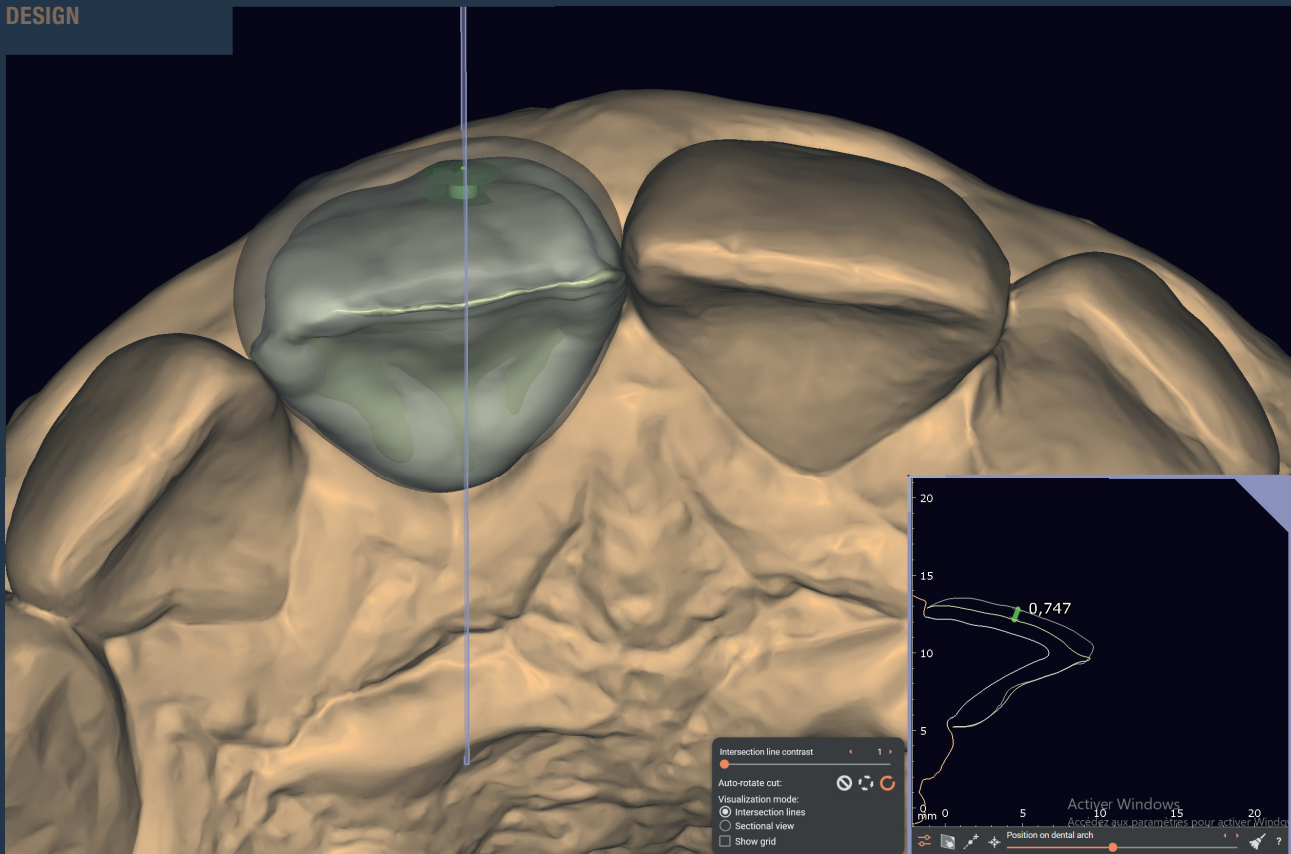
# FRAC- TURED TOOTH

IT SOMETIMES HAPPENS IN TRAUMA CASES: A FRACTURED INCISOR NEEDS TO BE RESTORED WITH A CROWN. THE CONTRALATERAL TOOTH IS WORTH BEING PRESERVED, BUT HAS SOME VERY OBVIOUS FRACTURE LINES. EVEN THOSE LINES CAN BE COPIED IN A MICRO-LAYER OF PORCELAIN WITH CERABIEN™ MiLai.

## DETAILS IN SHORT

Underlying structure	Normal tooth preparation
Determined tooth shade	A2
Type of restoration	Crown with vestibular cut-back
Framework material	KATANA™ Zirconia STML A2
Restoration design	0,5 mm vestibular cut-back, palatal surface just polished
Specific measures	-
Mixing liquid used	Simple water
Firing parameters	740°C

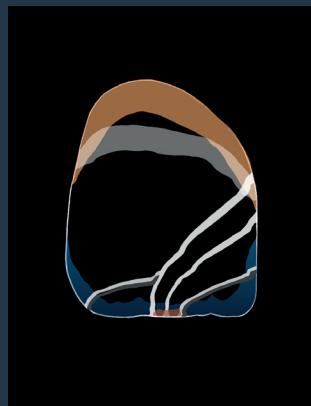
DESIGN



FRAMEWORK

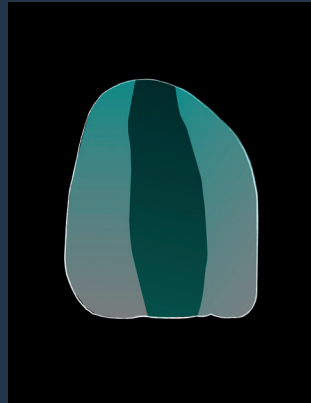
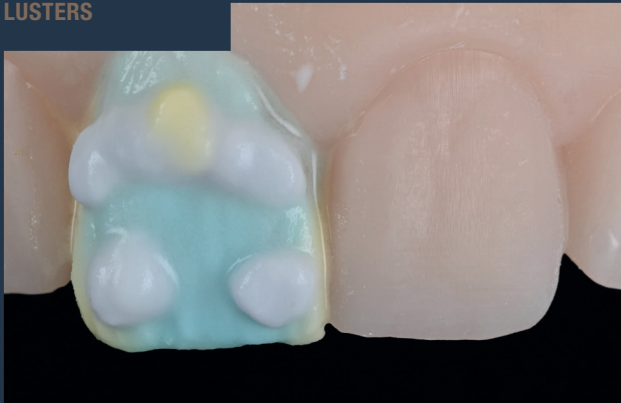


INTERNAL STAINS

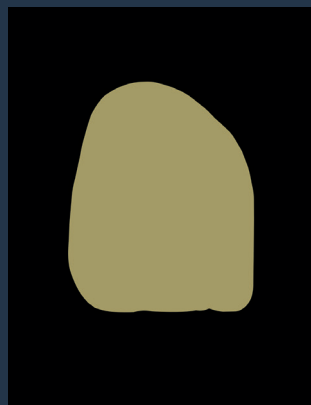


- White + Bright (1/20)
- Blue + Gray + Bright (1/2/1)
- White + Bright (1/1)
- (A+) + Bright (1/1)
- Gray + Bright (1/1)
- Cervical 2 + Bright (1/1)

LUSTERS



- E2 + LTx (1/1)
- LT1



- TX

**FINAL RESULT**



# TETRA- CYCLINE TEETH

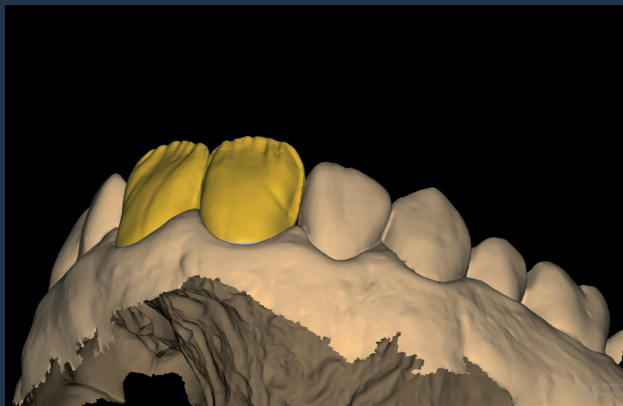
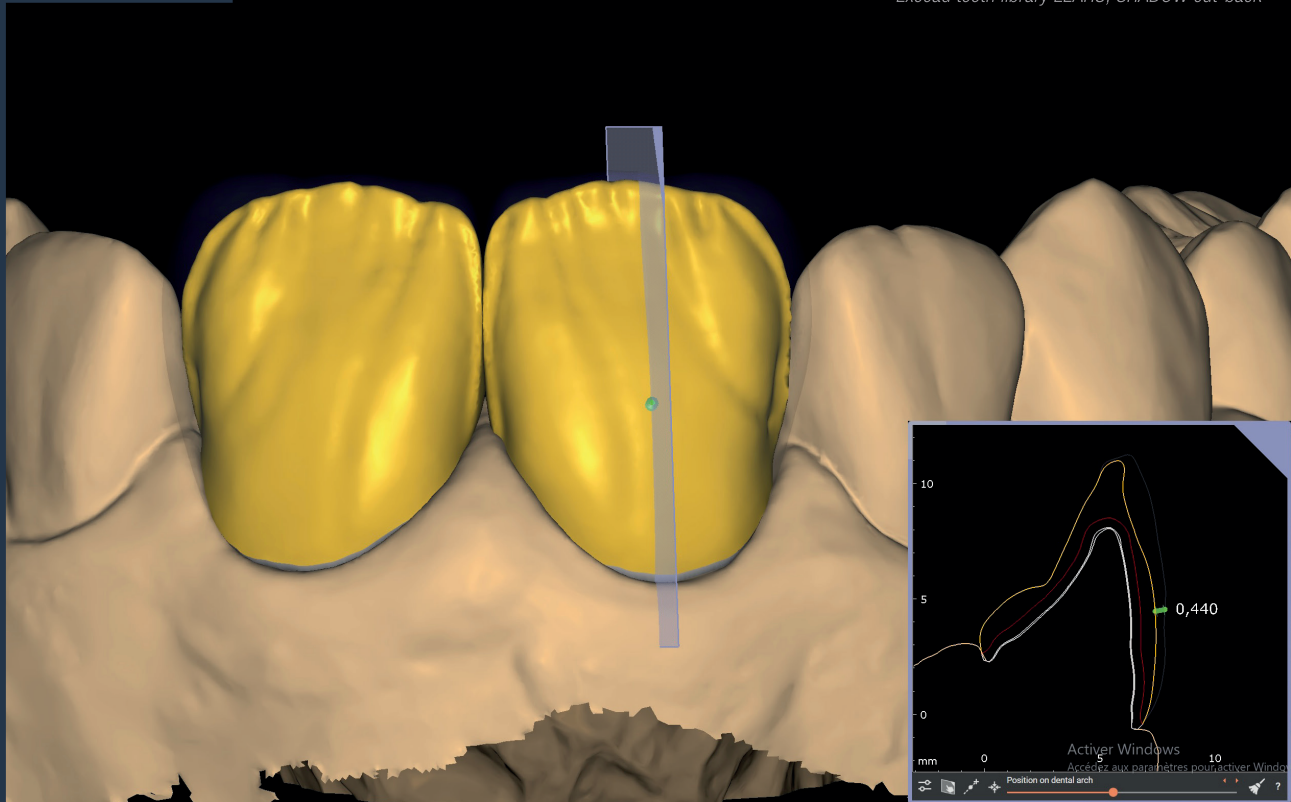
RESTORING TEETH WITH STAINING CAUSED BY THE USE OF TETRACYCLINE ANTIBIOTICS CAN BE CHALLENGING. DESPITE THE DARK, HIGHLY CHROMATIC UNDERLYING TOOTH STRUCTURE, HOWEVER, MICRO-LAYERING IS A SUITABLE OPTION – PROVIDED THAT AN APPROPRIATE FRAMEWORK MATERIAL IS USED.

## DETAILS IN SHORT

Underlying structure	Dark tooth preparation
Determined tooth shade	A2
Type of restoration	Crowns with vestibular cut-back
Framework material	KATANA™ Zirconia YML A2
Restoration design	0,5 mm vestibular cut-back, palatal surface just polished
Specific measures	-
Mixing liquid used	Simple water
Firing parameters	740°C

DESIGN

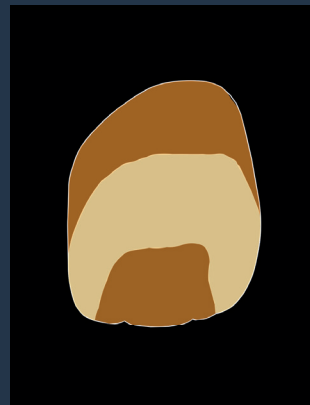
Exocad tooth library LEAHU, SHADOW cut-back



FRAMEWORK



WASH FIRING



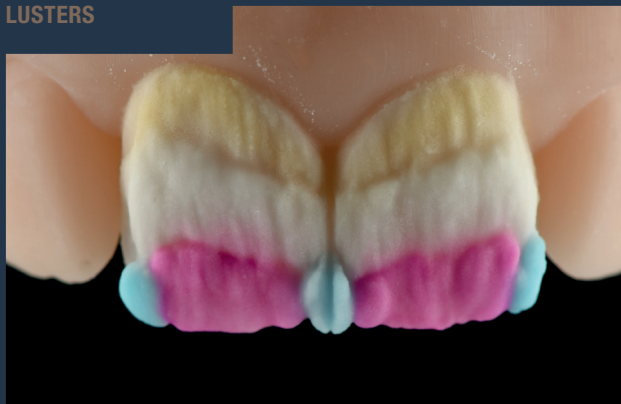
- CCV-2
- Value Liner 1 + Value Liner 2 (1/1)

INTERNAL STAINS



- Cervical 2 + Bright (1/1)
- Incisal Blue 1 + Incisal Blue 2 + Bright (1/2/1)

LUSTERS



- CCV-2
- Aqua Blue 2
- LT1
- LTx





FINAL RESULT



# AGED TOOTH

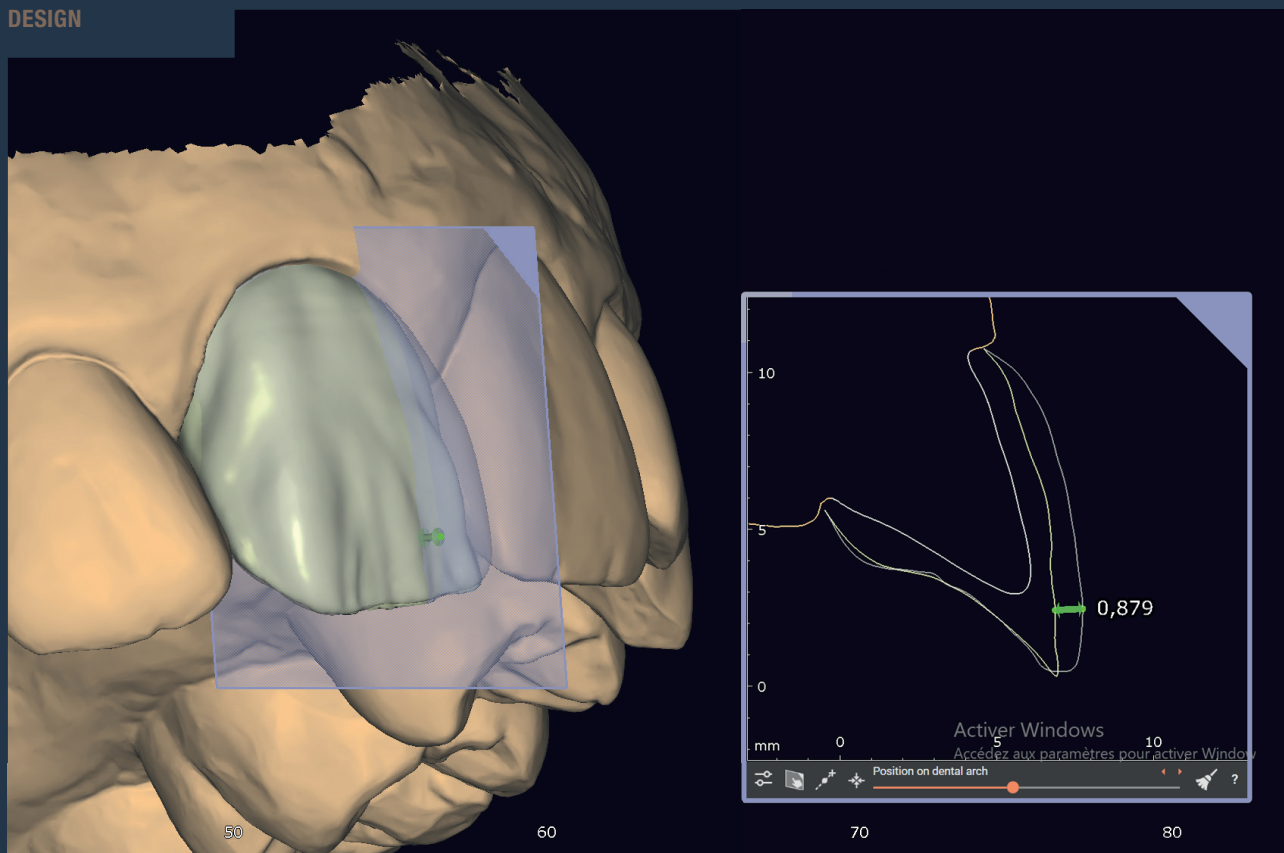
**THINNING ENAMEL, RECEDING GUMS: AGING HAS A DECISIVE IMPACT ON THE APPEARANCE OF ANTERIOR TEETH. TO IMITATE THIS LOOK USING CERABIEN™ MiLai, IT IS ESSENTIAL TO PLAY WITH CONTRASTING INTERNAL STAINS – AND WITH THE FRAMEWORK MATERIAL'S OPTICAL PROPERTIES.**

## DETAILS IN SHORT

Underlying structure	Metalic abutment*
Determined tooth shade	A3
Type of restoration	Crown with vestibular cut-back
Framework material	KATANA™ Zirconia UTML A2
Restoration design	0,5 mm vestibular cut-back, palatal surface just polished
Specific measures	-
Mixing liquid used	Simple water
Firing parameters	740°C

\* To mask the metal abutment during final cementation of a zirconia crown, the dentist should consider using an opaque resin cement, such as PANAVIA™ V5 Opaque shade.

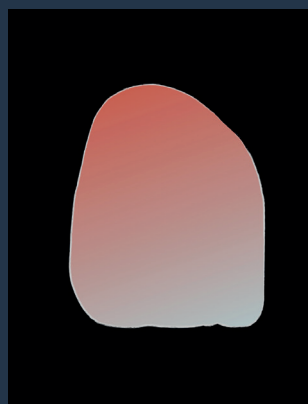
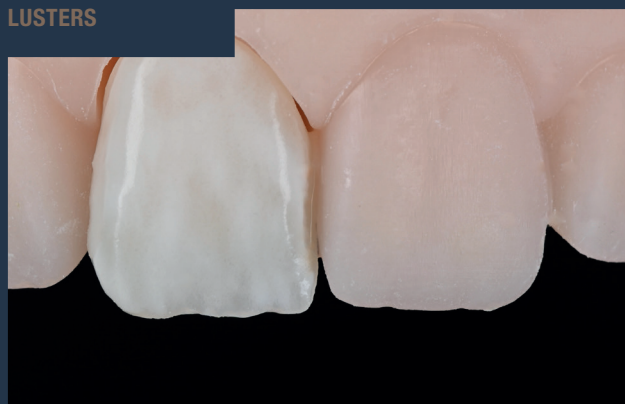
DESIGN



FRAMEWORK

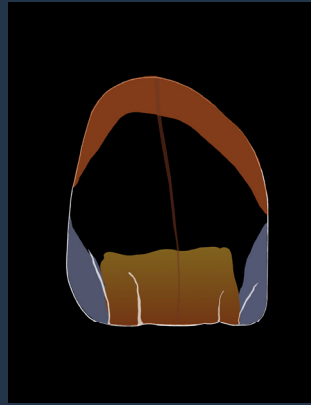


LUSTERS

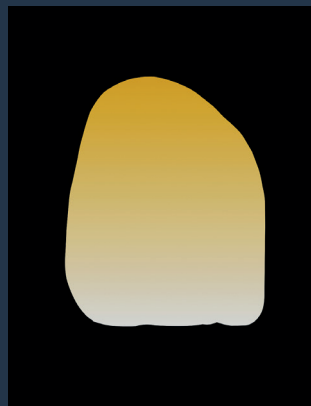


TX

INTERNAL STAINS



- Incisal Blue 2 + Gray + Bright (1/1/2)
- Cervical 2 + Bright (1/1)
- Bright + (A+) (1/1)
- White + Bright (1/10)



- LTx

FINAL RESULT



# DISCOVER CERABIEN™ MiLai

**CERABIEN**  
*MiLai*

CERABIEN™ MiLai IS A SET OF PORCELAINS AND INTERNAL STAINS SPECIFICALLY DESIGNED FOR THE MICRO-LAYERING TECHNIQUE. THE NAME “MiLai” IS DERIVED FROM THE TERM “MICRO-LAYERING” AND THE JAPANESE WORD “MIRAI” (WHICH MEANS FUTURE). THE INNOVATIVE PRODUCT BASED ON SYNTHETIC FELDSPAR ENABLES DENTAL TECHNICIANS TO ADD THE FINAL TOUCH TO THEIR ZIRCONIA OR LITHIUM DISILICATE RESTORATIONS IN A SIMPLE AND TIME-SAVING PROCEDURE – FOR OUTSTANDING AESTHETICS RIGHT FROM THE START.



# BAKING SCHEDULE

	DRY-OUT TIME	PREDRYING TEMPERATURE		START VACUUM		HEAT RATE		VACUUM LEVEL		RELEASE VACUUM		HIGH TEMPERATURE		HOLD TIME IN THE AIR	COOL TIME
		min.	°C	°F	°C	°F	°C / min.	°F / min.	kPa	°C	°F	°C	°F		
Wash Bake	5	500	932	600	1,112	45	81	96	740	1,364	740	1,364	1	4	
Internal Stain	5	500	932	–	–	45	81	0	–	–	700	1,292	–	4	
Liner / Enamel / Translucent / Luster / Clear Cervical	7	500	932	600	1,112	45	81	96	740	1,364	740	1,364	1	4	
Minor Adjustment	5	500	932	600	1,112	45	81	96	730	1,346	730	1,346	0,5	4	
Tissue	5	500	932	600	1,112	45	81	96	720	1,328	720	1,328	1	4	
Self Glaze	5	500	932	–	–	45	81	0	–	–	710	1,310	–	4	
CERABIEN™ ZR FC Paste Stain	5	500	932	600	1,112	45	81	96	730	1,346	730	1,346	1	4	

*The above program is only a guideline. Baking temperature may be varied with the peculiarities of different furnace. Porcelain furnace temperature variations may be significant in the lower ranges. Determine the exact baking schedule by making a preliminary test before baking an actual case restoration.*

## CERABIEN™ MiLai FIRING GUIDE



Achieving consistent, high-quality ceramic restorations requires more than just premium materials – it demands a deep understanding of your tools and processes. The CERABIEN™ MiLai Firing Guide is designed to help dental technicians unlock the full potential of this advanced micro-layering porcelain system. With tips on optimal furnace positioning, trial baking, and troubleshooting, this guide supports efficient, aesthetic results every time. Whether you're new to CERABIEN™ MiLai or looking to refine your firing process, this resource lays the groundwork for success.




# COLOURS

## CERABIEN™ MiLai LINE-UP





### ENAMEL SURFACE

-  **Tx**  
Add high translucency to the enamel surface
-  **ELT<sub>1</sub>**  
Add brightness to your bleached restorations
-  **LTx**  
Add high translucency and opalescence to the enamel surface
-  **LT<sub>1</sub>**  
Add standard translucency and opalescence to the enamel surface
-  **Creamy Enamel**  
Add brightness to the enamel surface



### ENAMEL STRUCTURE

- Incisal effect**
-  **LT Super Gray**  
Optimise the incisal area of your middle-aged patients' restorations
  -  **LT Royal Blue**  
Add a strong bluish effect to the incisal area
  -  **Aqua Blue 2**  
Optimize the incisal area of your young patients' restorations
- Cervical effect**
-  **CCV-2**  
Individualise the cervical area


### TISSUE

-  **Tissue 1**  
Individualize large gingival areas
-  **Tissue 4**  
Individualize large gingival areas
-  **Tissue 5**  
Add opacity and adjust the value for the inner part of the gingival tissue
-  **Tissue 6**  
Individualize large gingival areas

### VALUE CONTROL





-  **Value Liner 1**  
Increase the value of your lithium disilicate restorations
-  **Value Liner 2**  
Increase the value and chroma of your lithium disilicate restorations





### INCISAL DENTIN SURFACE

-  **E<sub>2</sub>**  
Add translucency to the dentin structure

### INTERNAL STAIN

- Enamel**
-  **Gray**
  -  **Incisal Blue 1**
  -  **Incisal Blue 2**

- Dentin**
-  **Mamelon Orange 2**
  -  **Cervical 2**
  -  **A<sup>+</sup>**
  -  **B<sup>+</sup>**

- Translucent effect**
-  **Fluro**
  -  **Bright**
- Tissue**
-  **Tissue Pink**
  -  **Tissue Red**

- Adjustment & enhancement**
-  **White**
  -  **Blue**
  -  **Yellow**
  -  **Salmon Pink**



**DISCOVER CERABIEN™ MiLai**



EU Importer

**Kuraray Europe GmbH**

Philipp-Reis-Strasse 4,  
65795 Hattersheim am Main, Germany  
Phone +49 (0)69 305 35 835  
Fax +49 (0)69 305 98 35 835  
[www.kuraraynoritake.eu](http://www.kuraraynoritake.eu)  
[centralmarketing@kuraray.com](mailto:centralmarketing@kuraray.com)

- Before using this product, be sure to read the Instructions for Use supplied with the product.
- The specifications and appearance of the product are subject to change without notice.
- Printed color can be slightly different from actual color.

"KATANA" and "CERABIEN" are registered trademarks or trademarks of NORITAKE CO., LIMITED.



**Kuraray Noritake Dental Inc.**

300 Higashiyama, Miyoshi-cho, Miyoshi, Aichi 470-0293, Japan



08/2025/MKA00737